

# TOSHIYOSHI LAB.

MEMS, Micromachines by Semiconductor Microfabrication



Department of Informatics and Electronics  
Centre for Interdisciplinary Research on Micro-Nano Methods

Department of Electrical Engineering and  
Information Systems (EEIS)

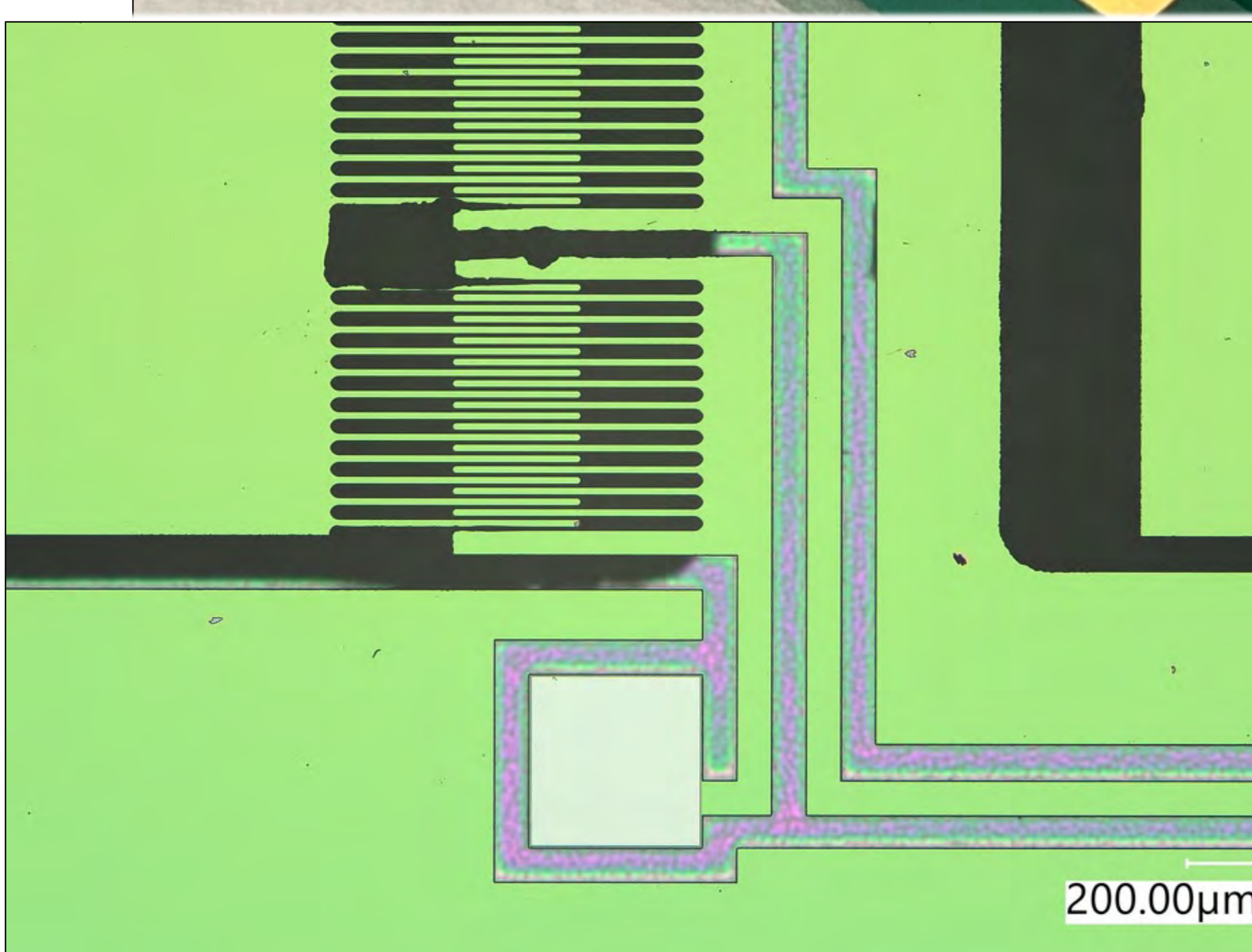
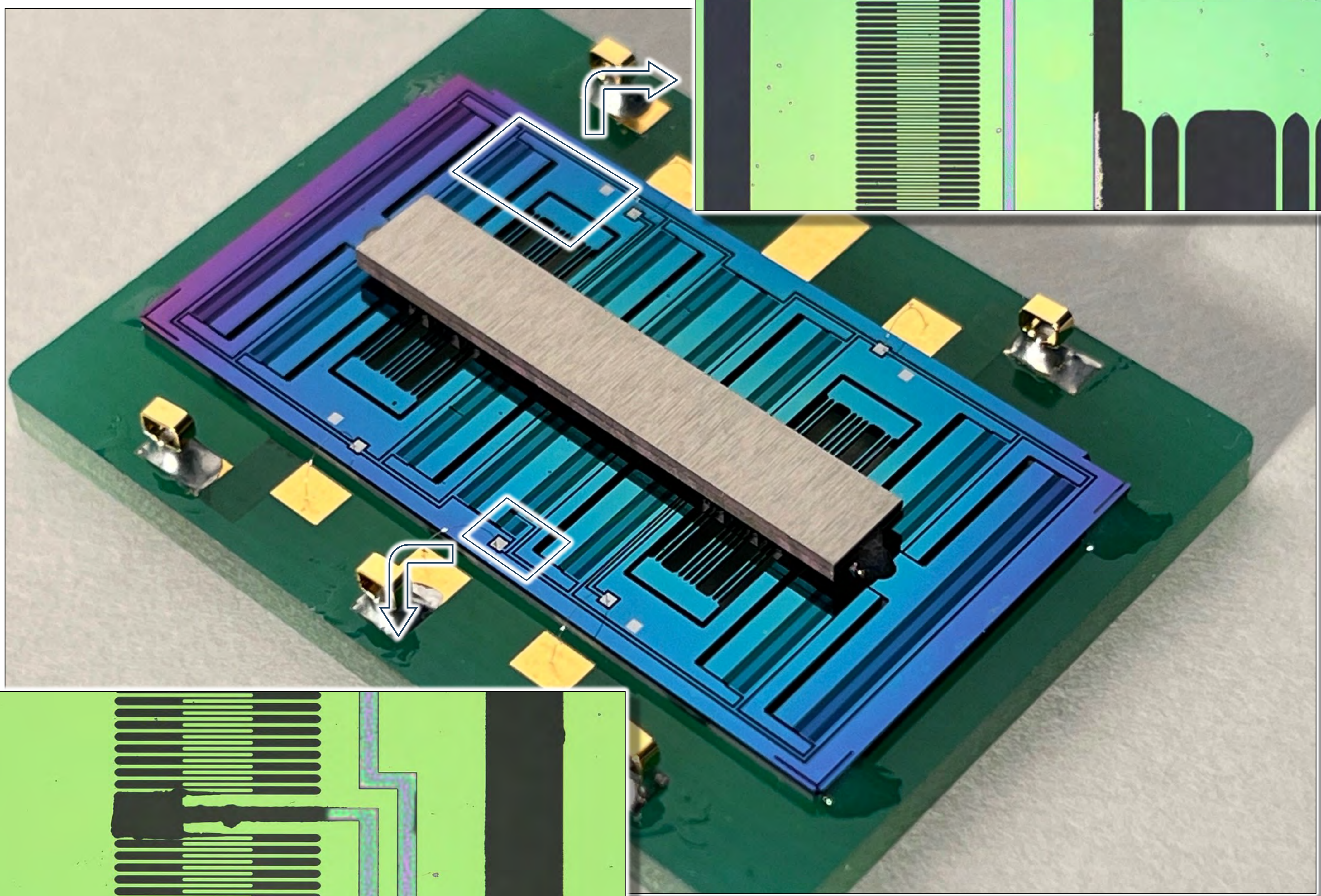
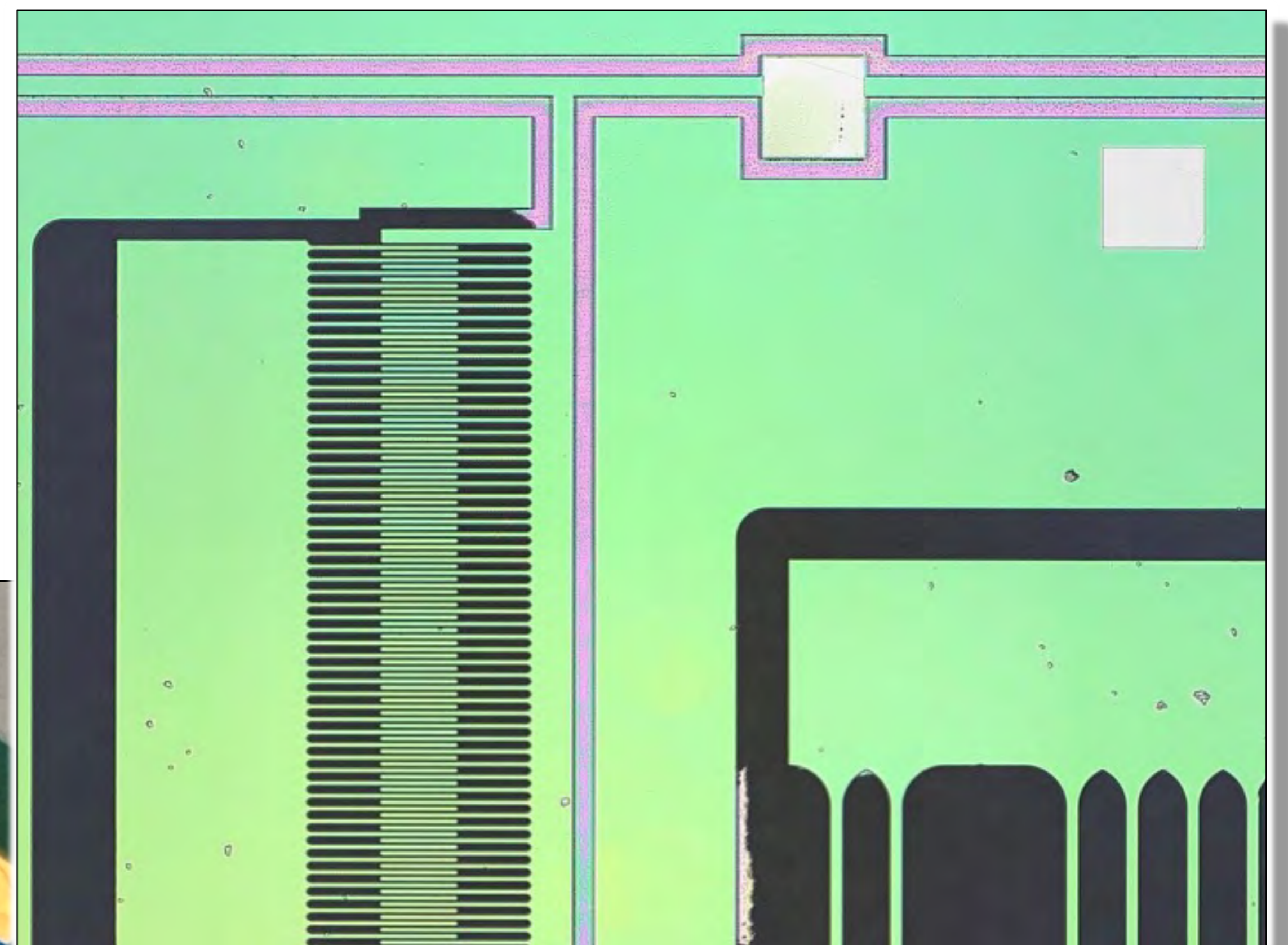
MEMS / NEMS

Department of Advanced Interdisciplinary Studies (AIS)

<http://toshi.iis.u-tokyo.ac.jp/toshilab/>

# MEMS

Sensors, Actuators,  
Energy Harvesters and More



Toshiyoshi Lab  
See our HP →

